

## *Quick User Guide*

---

# DB910

## Full Duplex Compact IP Audio Codec

→ **BEFORE YOU USE THIS PRODUCT** ←

In order to be able to enjoy all the benefits of owning your new DEVA product, please verify first that the latest software and firmware release were installed.

Visit [www.devabroadcast.com/downloads](http://www.devabroadcast.com/downloads) for the most recent software and firmware downloads, prior the installation.

This Quick user guide will make the installation of **DB910** quick and easy. Applying these principles, you can simplify the process and save yourself extra time and effort. **For more information about the Safety precautions and the Operating environment recommendations please refer to the User Manual.**

## STEP 1

### Connection

1. Using a cable ending with two standard Phone jacks connect DB910 analog input the analog audio outputs of your equipment. Do not exceed maximum input level. This may permanently damage the device.
2. Using a cable ending with a standard Phone jack connect DB910 AES/EBU input to the AES/EBU audio output of your equipment.
3. Using a cable ending with two standard Phone jacks connect DB910 analog outputs to the analog audio inputs of your equipment.
4. Using a cable ending with a standard Phone jack connect DB910 AES/EBU output to the AES/EBU audio input of your equipment.
5. For normal operation it is necessary the device to be connected to a local network or Internet by cable with RJ-45 connector.
6. Connect the device to the power supply.

## STEP 2

### Configuration

DB910 is controlled through a built in WEB Server and a standard web browser can be used to monitor its status or to make some adjustments.

To operate the device you need to know its IP Address. In case you are not aware of it, you can hear it through the headphones when you turn on the the device. Alternatively, use the Network discovery feature at Local networks (for reference see Step 3).

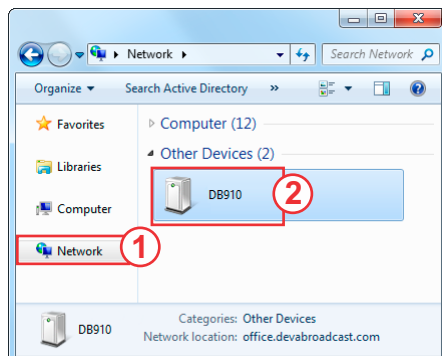
## STEP 3

### Network discovery for Windows 7

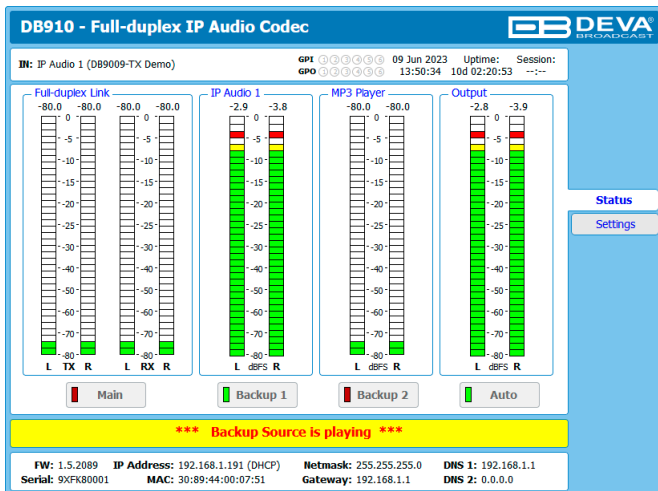
Network discovery is a network setting that defines whether your computer can see (find) other computers and devices on the network and whether other computers on the network can see your computer. By default, Windows Firewall blocks network discovery but you can enable it.

If you have already enabled this function on your computer just open a new Explorer bar and click on **(1)**. The device must be displayed.

1. Open Advanced sharing settings by clicking the Start button, and then on "Control Panel". In the search box, type "network", click "Network and Sharing Center", and then, in the left pane click "Change advanced sharing settings";
2. Select your current network profile;
3. Click **Turn on network discovery**, and then click Save changes. If you're prompted for an administrator password or confirmation, type the password or provide confirmation.
4. To access the device open a new Explorer bar and click on **(1)**. If you have successfully enabled the network discovery option, the device will be displayed. Double click on **(2)** will open a new WEB browser window requiring username and password. Default values being -Username: user or admin, Password: pass.



A successful log-in in the WEB Interface will look like this:

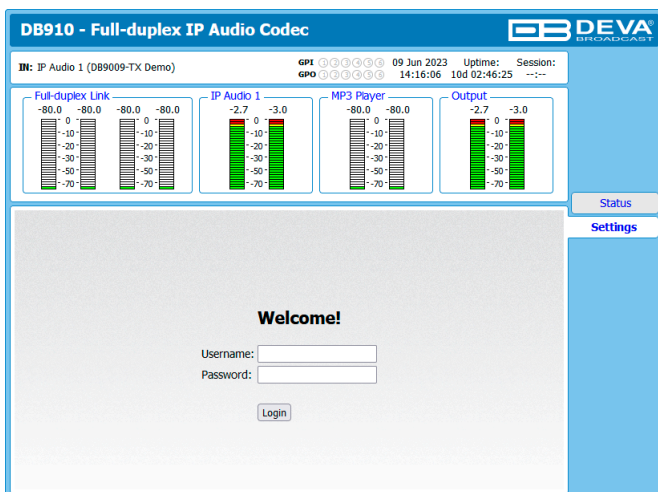


Upon opening the WEB interface, the main Status window will appear. The page contains information on the device's current status - the LED bar-graph representation of the left and right Digital and Analog audio levels in dBFS, as well as the Active connections - Type, Status, Remote Peer and Codec.

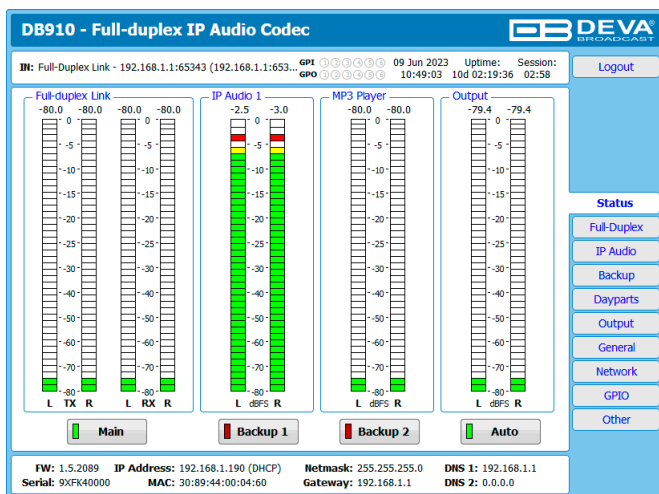
At the top of the control window is placed a constant section, containing information about the input in use, Date/Time and session timeout.

The DB910 provides you with a protected access to the device settings. Upon pressing the Settings button, a window requiring username and password will appear.

**To make the necessary adjustments to the device log in as ADMINISTRATOR.** This will give you full control over the settings. The default values being username: *admin*, password: *pass*);



Upon entering the device's settings, you will be able to apply needed adjustments.



For further information on the available options and features, please refer to the User Manual which can be found on [www.devabroadcast.com/downloads](http://www.devabroadcast.com/downloads), and the accompanying CD.

**Thank you for choosing DEVA!**

*Please refer to the User manual for detailed information on how to configure and explore your device.*