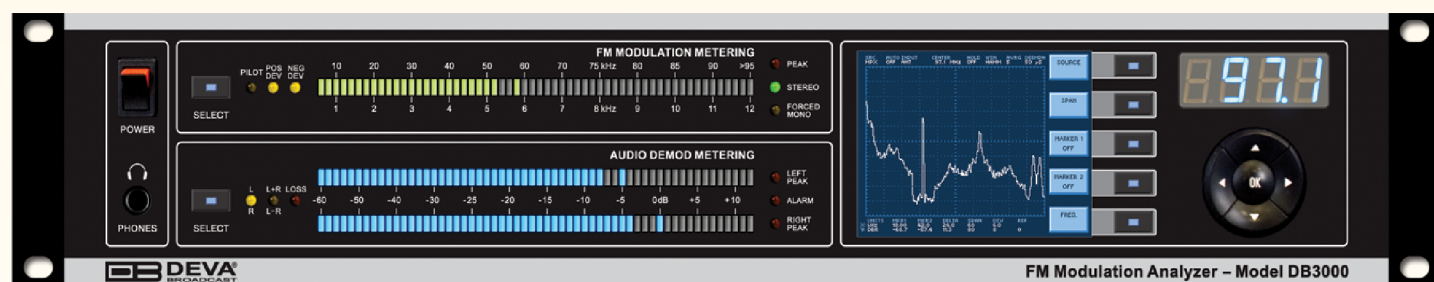


High Performance DSP-Based FM Modulation Analyzer

The DB3000 FM Modulation Analyzer is a digital FM demodulator and modulation analyzer. The RF (IF) and MPX signal is digitalized as soon as it enters the device, and all signal processing is then made through calculations. Digitizing in this way, at the input gives the equipment measurement reproducibility over time. Digital filters' accuracy, used in this equipment, enables the FM multiplex signal's components to be accurately and repeatedly reproduced from one device to another, i.e. same signal applied to two devices will give the same result. The processing power in this equipment enables all measurements to be refreshed simultaneously and synchronously, thereby allowing for detailed readings of all the Multiplex FM signal components.

DB3000 incorporates easy to read, high-resolution bargraph displays that allow reading the main signal parameters at a glance. The built-in DB3000 Oscilloscope representing the observed signal change over time, enables you to visualize the most important signals participating in the process of demodulating and stereo decoding. Similarly to the Oscilloscope mode, Spectrum analyzer is a mode for spectral analysis of the input signal and part of DB3000 features. Spectral components of the selected signal are determined on the base of Fast Fourier Transform. MPX Power measurement, supporting measurement history data is yet another DB3000's great feature. In addition to the list of DB3000 features, RDS information that is contained in the processed MPX signal is easily visualized and represented as RDS/RBDS Data and RDS/RBDS Statistics.

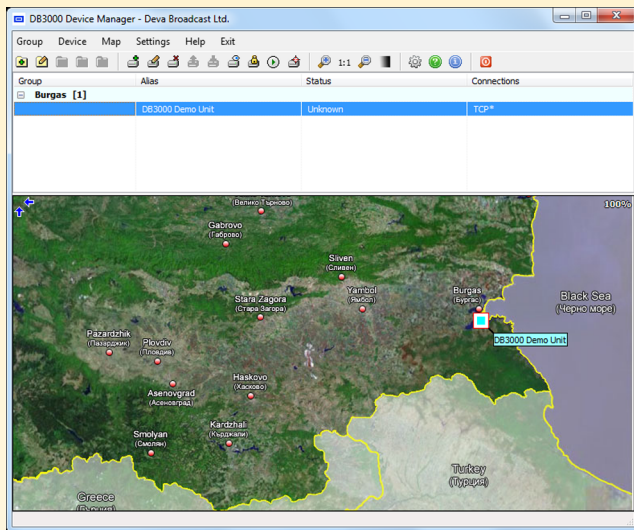
Adjustable Alarms enable Alarm Signal for the most important signals and signal components and parameters to be generated and fed to the Rear Panel Alarm Terminal for remote alarm notification. DB3000 is designed to support RS232, USB and LAN communication interfaces, allowing flexibility in remote connection and control of the unit. Dependable off-air monitoring lets you keep an eye on other stations in the market as well as measuring the important parameters of your own signal.



*Incorporating all the necessary features at a very affordable price,
DB3000 is the best FM Mod-Monitor and measurement tool ever made.*

FEATURES

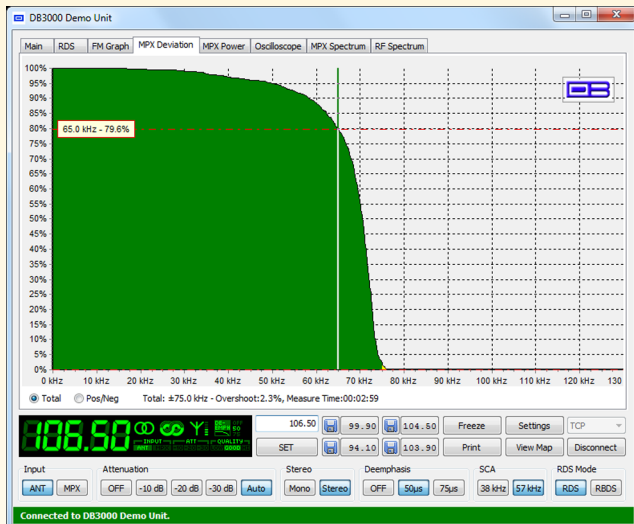
Fully DSP based core
Bright, accurate bargraph LED metering of the Modulation and Pilot Levels
Total and independent Positive and Negative deviation bargraph
Left, Right, L+R, L-R bargraph LED audio level meters
Accurate "floating dot" program peak marker
Easy to ready LED display for selected frequency
Very Intuitive Navigational Menu
Built-in Oscilloscope allowing IF, MPX, Pilot, Subcarriers, Left, Right, Left+Right and Left-Right display
MPX Power measurement with data history
RF Spectrum analyzer allowing to check the RF Carrier parameters
MPX Spectrum analyzer for Pilot, SCA, L/R, L+R and L-R measurements
Direct MPX Input for external composite signal measurement
Selectable De-emphasis – Off, 50µs and 75µs
Quick Station access via 15 Presets
Built-in Stereo Decoder and Selectable Forced Mono mode
Protected access to the device settings
Date & Time Settings with various formats
Level Adjustable Balanced Analog Audio Outputs on XLR Connectors
Professional AES/EBU Digital audio output on XLR connector
LAN port for full TCP/IP remote control and monitoring
Headphone output with front panel level control
Up to 90dBµV direct RF Antenna Input
Adjustable MIN/MAX alarms for Carrier Loss, Multipath, Deviation, Pilot signal, Subcarriers, Analog Audio Loss
USB, and RS232 communication interfaces
Alarm tally outputs for remote fault indicators
Easy and intuitive Windows Application
Firmware update for future-proof operation
Parameters Factory Restore option
Operating voltage range 110-120V or 220-250V AC
19" Professional Case for high RF immunity



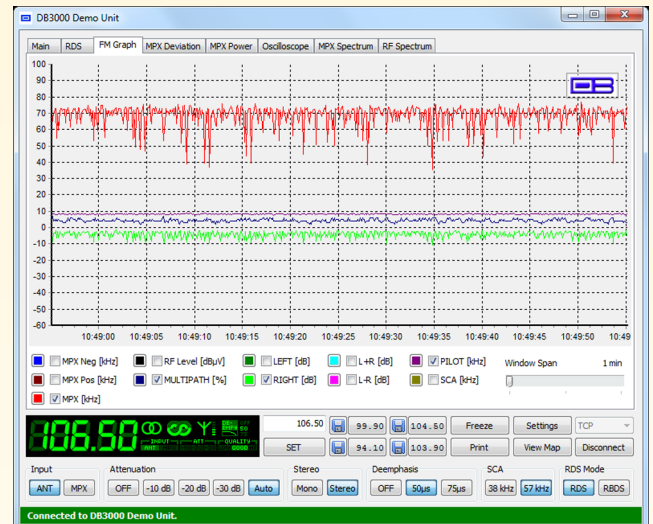
**Main Application View
with Device List and User Defined Map**



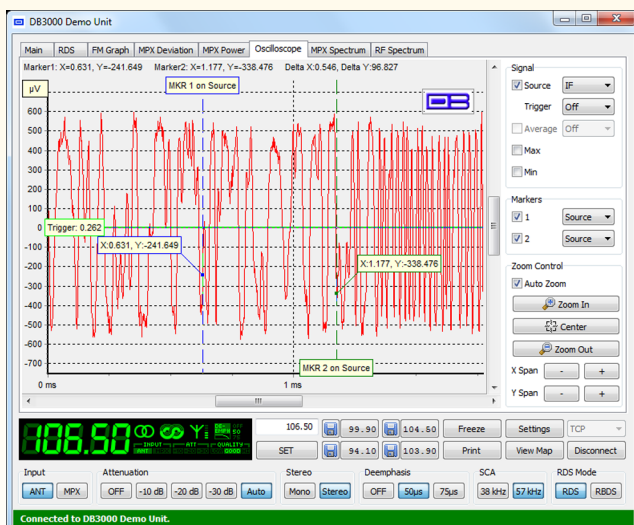
**Main Device View
with all mandatory parameters as LED readings**



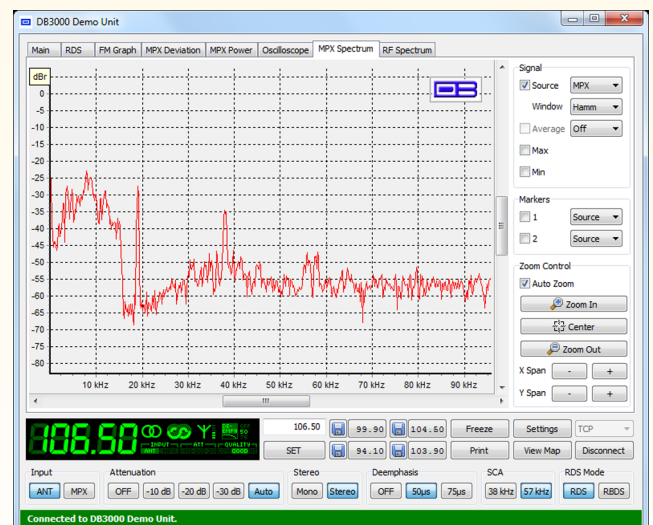
MPX Deviation Overshoot



FM Graph with selectable readings



Oscilloscope



MPX Spectrum FFT

SPECIFICATIONS

RF Input	
Frequency range	88.0 to 108.0 MHz, Frequency Agile
Step increment	100 kHz
Antenna Input	30 dB μ V sensitivity, 50 Ω BNC Connector
Internal attenuator	0, 10, 20 and 30 dB
Dynamic range	0 to 100 dB μ V

MPX Input	
Frequency Range	10 Hz to 200 kHz, 1 BNC Connector
Impedance	10 k Ω
Sensitivity	3.5 Vp-p @ 75kHz

FM Demod	
Frequency Response	± 0.1 dB, 10 Hz to 96 kHz
SCA filter	38 kHz and 57 kHz selectable
MPX power	± 12 dBr, 20 sec. integration

Stereo Decoder	
Frequency Response (L & R)	± 0.1 dB, 10 Hz to 15 kHz
SNR (Stereo)	80 dB, 50 μ s de-emphasis
Distortion	0.02%, 10 Hz to 15 kHz 50 μ s de-emphasis

Separation	
L to R, R to L	50 dB, 50 Hz to 10 kHz, 50 μ s de-emphasis

Crosstalk	
L+R to L-R	55 dB min
L-R to L+R	55 dB min

Computer Interface	
RS-232	9-pin Male D-Sub Connector
USB	B-type Connector
Ethernet	10/100 Base -T RJ-45 Connector

Power Requirements	
Power Supply	40 Watts, 115/230V, 50/60 Hz
Connector	IEC320

FFT Spectrum Analysis (RF, Composite, Audio)	
Display Modes	Realtime, Average, Min Hold, Max Hold
Dynamic range	90 dB
FFT length	2048
Sampling rate	572 kHz - IF, 192 kHz - Composite, 48 kHz - Audio

Scope Analysis (RF, Composite, Audio)	
Display Modes	Realtime, Average, Min Hold, Max Hold
Trigger mode	Rise, Fall, Off
Dynamic range	90 dB
Sampling rate	572 kHz - IF, 192 kHz - Composite, 48 kHz - Audio

Metering Accuracy	
RF Level	± 1 dB, 10 to 90 dB μ V
MPX Power	± 0.2 dBr, -12 to 12 dBr, 0.1 dBr res.
Total, Pos, Neg	± 2 kHz, 10 to 100 kHz, 1 kHz res.
Pilot	± 0.5 kHz, 1 to 12 kHz, 0.2 kHz res.
SCA	± 0.5 kHz, 1 to 6.5 kHz, 0.2 kHz res.
L, R, L+R, L-R	± 1 dB, +10.0 to -70.0 dB, 0.1 dB res.

Outputs	
Composite	3.5 Vp-p @ 75kHz, 75 Ω unbalanced BNC Connector
Audio (L, R)	+6 dBm, 600 Ω balanced XLR Connector
AES3 (L, R)	5.0 Vp-p, 110 Ω balanced XLR Connector
Alarms	dedicated terminals on rear panel, optoisolated
Headphone	1/4" Phone Jack

Size and Weight	
Dimensions (W;H;D)	(482mm;89mm;300mm) (19";3.5";11.8"), 19" Rack Unit;
Shipping Weight	6 kg

Included Accessories:

Power cable, User's manual, CD-ROM with DB3000 Device Manager Software for MS WINDOWS®

