

## ***Quick User Guide***

---

# RF2IP

## Digital RF Power Monitoring Probe with LAN Connectivity

### → **BEFORE YOU USE THIS PRODUCT** ←

In order to be able to enjoy all the benefits of owning your new DEVA product, please verify first that the latest software and firmware release were installed.

Visit [\*\*www.devabroadcast.com/downloads\*\*](http://www.devabroadcast.com/downloads) for the most recent software and firmware downloads, prior the installation.

This Quick user guide will make the installation of RF2IP – Digital RF Power Monitoring Probe with LAN Connectivity quick and easy. Applying these principles, you can simplify the process and save yourself extra time and effort. **For more information about the Safety precautions and the Operating environment recommendations please refer to the User Manual.**

## STEP 1

### Connection

- Install the unit on its operation place;
- Connect the antenna cable to the two SMA connectors located on the rear panel of the device;
- Connect RF2IP to the TCP/IP network using a direct network cable.

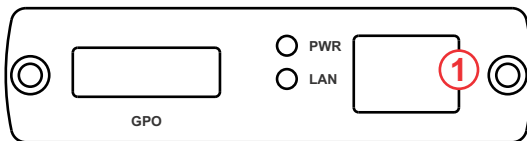
The RF2IP unit is powered by LAN Cable. It is very important, when the initial connection is made, the POE 802.3AF standard to be observed. Having that in mind, make sure that the POE supplies 48 volts.

## STEP 2

### Network Settings

After connecting the network cable the LED 'LAN' indicator (1) located on the rear panel must be ON or flashing. These are the Default Network Settings:

**DHCP:** Enabled  
**IP:** Assigned by DHCP  
**Mask:** Assigned by DHCP  
**Gateway:** Assigned by DHCP  
**DNS:** Assigned by DHCP  
**HTTP Port:** 80



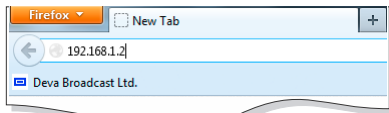
**NOTE:** RF2IP has an DHCP assigned IP address by default. In order to establish a communication, your PC should be connected to the same Sub network as the device. For further information consult with your network administrator.

## STEP 3

### WEB Interface

RF2IP is controlled through RF2IP Hub or a built-in WEB Server. A standard web browser can be used to monitor its status or to make some adjustments. To operate the device you need to know its IP address and follow these steps:

1. Open a new WEB Browser;
2. Enter the device IP address in the Address field and press "Enter";



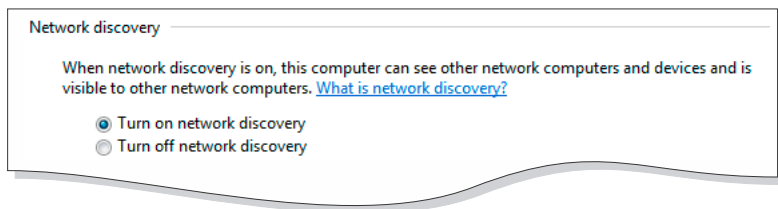
3. A window requiring a username and a password will appear. Default values are username: *admin* and password: *pass* (For more information refer to **Step 5**).

**In case you are not aware of the IP Address, use the Network discovery feature at Local networks or refer to Step 4.**

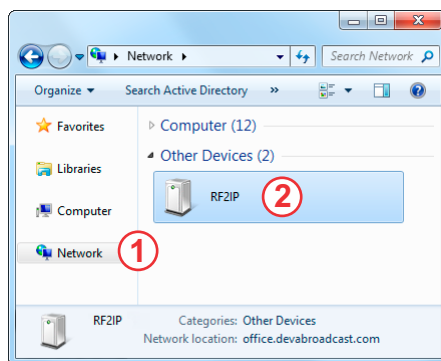
**NOTE:** If the port is different than the default one (80), it is need to be specified. For example: *http://192.168.1.2:9000*

Network discovery is a network setting that defines whether your computer can see (find) other computers and devices on the network and whether other computers on the network can see your computer. By default, Windows Firewall blocks network discovery but you can enable it.

1. Open Advanced sharing settings by clicking the Start button, and then click on "Control Panel". In the search box, type "network", click "Network and Sharing Center", and then, in the left pane click "Change advanced sharing settings".
2. Select your current network profile.
3. Click **"Turn on network discovery"**, and then click "Save changes". If you're prompted for an administrator password or confirmation, type the password or provide confirmation.



4. To access the device, open a new Explorer bar and click on **Network (1)**. If you have successfully enabled the network discovery option, the device will be displayed. Double click on **RF2IP (2)** will open a new WEB browser window requiring a username and a password.  
(For more information refer to **Step 5**)



**NOTE:** If you have already enabled this function on your computer just open a new Explorer bar and click on **Network (1)**. The device will be displayed. If not, follow the instructions from **Step 4**.

**STEP 5****WEB Interface Login**

RF2IP provides you with a protected access to the device settings.

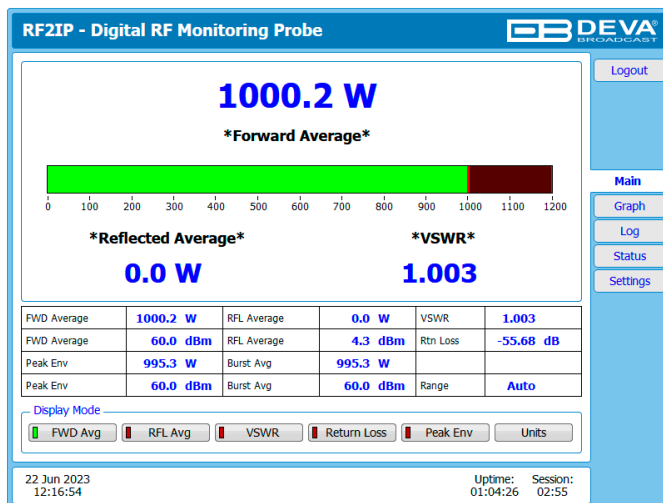
The device serves only one user at a time, thus username and password will be requested when login. Default values are *admin* and *pass*.



The login screen for the RF2IP device. It features a blue header with the title 'RF2IP - Digital RF Monitoring Probe' and the DEVA BROADCAST logo. The main area is white with a 'Welcome!' message. Below this are input fields for 'Username:' and 'Password:', followed by a 'Login' button.

**STEP 6****WEB Interface Operation**

After successful log in the Control Window will look like this:



The RF2IP has two inputs and measures both the forward and the reflected power.

**Forward** – measures the power fed to the antenna system;

**Reflected** – measures the returned/reflected power from the antenna system.

Depending on the selected Display Mode, the Main Screen of the WEB Interface can show the Forward Average, Reflected Average, VSWR, Return Loss or Peak Env parameters represented as LED readings. The units to be used are easily changed via the [Units] interactive button.

Following the easy to read manner of presentation, a table containing all the needed information in both W and dBm units is also available.

*Please refer to the User manual for detailed information on how to configure and explore your device.*