

Quick User Guide

DB64-FM

FM Radio 4-Band Broadcast Audio Processor with RDS/RBDS Encoder

→ BEFORE YOU USE THIS PRODUCT ←

In order to be able to enjoy all the benefits of owning your new DEVA product, please verify first that the latest software and firmware release were installed.

Visit www.devabroadcast.com/downloads for the most recent software and firmware downloads, prior the installation.

This Quick user guide will make the installation of **DB64-FM** quick and easy. Applying these principles, you can simplify the process and save yourself extra time and effort. **For more information about the Safety precautions and the Operating environment recommendations please refer to the User Manual.**

STEP 1

Connection

1. Install the unit on its operation place;
2. In order for the proper work of DB64-FM to be guaranteed, and due to the variability of the signal levels, the right reference levels of the digital and analog inputs should be set. For further information, please refer to the complete user manual.
3. Before connecting the AC Power, make sure that the fuse rating is in accordance with the mains supply at your location. DB64-FM Power Supply Factory Settings are: 100-240 V AC; 1A Fuse;
4. Configure the DB64-FM in the proper connection configuration. For further information on the most common use, please refer to **Step 2**.
5. If need be, change the default factory preset with the one preferred. This can be made via the front panel menu or WEB Interface.
 - Via front panel - press *Soft button 4* (from the left to the right), then using the UP and DOWN buttons select the preferred preset;
 - Via the WEB interface (for further information on how to access the device via WEB, refer to **Step 3**) - connect the device as an administrator, select "Presets" menu, and select the preferred audio preset.

For further information on how to create your own audio preset, or how to set up the Dayprting function, please refer to the complete user manual.

STEP 2

Configuration

The DB64-FM supports several types of configuration connections, depending on the client's preferences. The two basic connections are described in details below. For the other available configurations, please refer to the complete user manual - www.devabroadcast.com/downloads

STEP 2.1

Analog Program

DB64-FM is fed with analog audio. The main program output is sent to the DB64-FM Audio Processor via XLR Connection. The MPX composite output is sent via BNC connection to the transmitter MPX input. The audio processor output is MPX OUT -1.

DB64-FM – Broadcast Audio Processor



Once the connection process is completed, connect the AC power to the unit. Then, using the front panel menu, navigate to **Input > Input Select >** and set **Main Analog** input as appropriate for your installation.



BROADCAST CONSOLE

NOTE: It is mandatory (for both configurations - **Step 2.1** and **Step 2.2**) that the cable used for connection between DB64-FM's MPX output, and the MPX input of the transmitter be as short as possible. This will prevent any face distortion.

STEP 2.2

Digital Program

DB64-FM is fed with AES/EBU digital audio. The main program output is sent to the DB64-FM Audio Processor via XLR Connection. The MPX composite output is sent via BNC connection to the transmitter MPX input. The audio processor output is MPX OUT -1.

DB64-FM – Broadcast Audio Processor



Digital Input

Program Output
Digital AES/EBU



BROADCAST CONSOLE

Control Room
ON AIR

RF Power out for Antenna

MPX IN
MPX OUT -1

FM Transmitter

Once the connection process is completed, connect the AC power to the unit. Then, using the front panel menu, navigate to **Input > Input Select >** and set **Main Digital** input as appropriate for your installation.

STEP 3

WEB Interface Access

There are two options for access to the WEB Interface of DB64-FM. The first one is through manual identification of the IP address of the device, and the second one is through the Network discovery option (For Windows 7 users only).

STEP 3.1

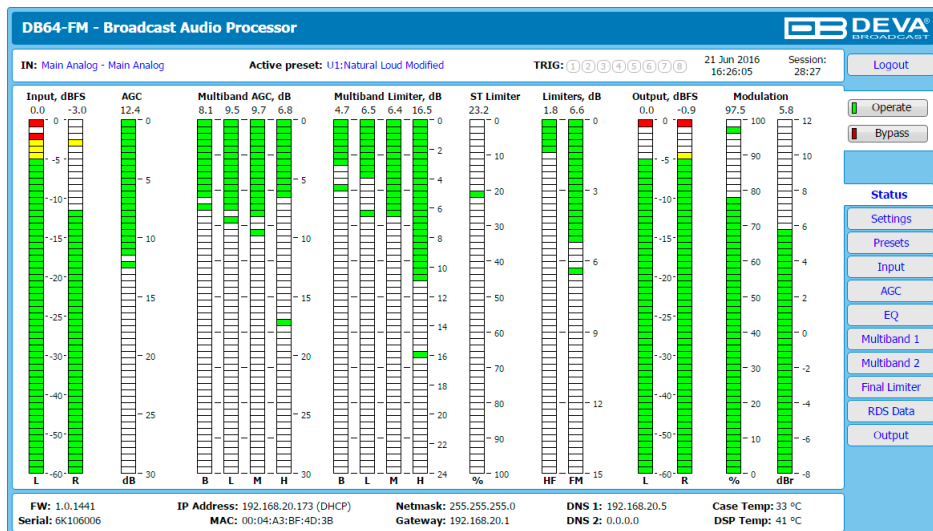
Manual IP Address Identification



1. Connect the device to a local network or to the Internet by the applied LAN cable. Through the Front panel navigational menu pressing the "OK" button you will enable you to enter the device main menu;
2. Using the "Right" navigational button find the "Status" section located at the end of the Menu;
3. Press the "OK" Button to enter the "Status Section". Via the Front panel navigational menu press the "DOWN" button. This operation will visualize the screen containing information about the IP Address of the device;
4. Open a new WEB Browser and enter the device IP address in the address field then press "Enter";
5. A window that requires username and password will appear. Default values being - Username: user or admin, Password: pass.

NOTE: Due to the inability of some WEB Browsers to read the IP address format displayed on the screen of the device, the numbers included in the IP Address must be written without the leading zeros. For example: **192.168.020.068** must be written as **192.168.20.68**

A successful log-in in the WEB Interface will look like this:

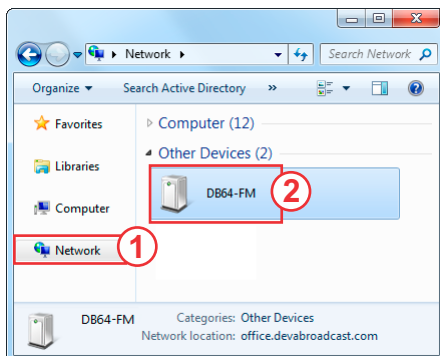


STEP 3.2

Network discovery for Windows 7

Network discovery is a network setting that defines whether your computer can see (find) other computers and devices on the network and whether other computers on the network can see your computer. By default, Windows Firewall blocks network discovery but you can enable it.

1. Open Advanced sharing settings by clicking the Start button, and then on "Control Panel". In the search box, type "network", click "Network and Sharing Center", and then, in the left pane click "Change advanced sharing settings";
2. Select your current network profile;
3. Click Turn on network discovery, and then click Save changes. If you're prompted for an administrator password or confirmation, type the password or provide confirmation.
4. To access the device open a new Explorer bar and click on (1). If you have successfully enabled the network discovery option, the device will be displayed. Double click on (2) will open a new WEB browser window requiring username and password. Default values being - Username: user or admin, Password: pass.



NOTE: If you have already enabled this function on your computer just open a new Explorer bar and click on (1). The device must be displayed. If not follow the instructions from Step 3.1 or Step 3.2

Thank you for choosing DEVA!

Please refer to the User manual for detailed information on how to configure and explore your device.